

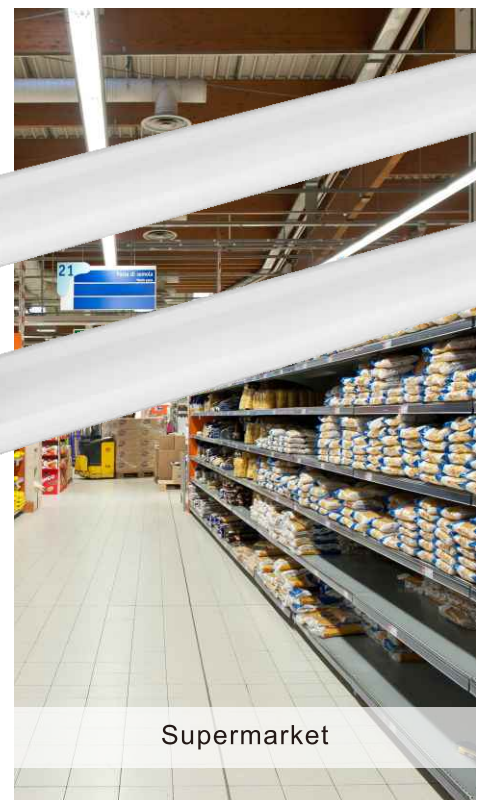
## NVC LED T8E-II Tube & NLED480E T8 Batten

When we find the tubes in louver or batten are not bright enough, even there are some dark areas at the end of tubes, we need to consider to change new and higher efficiency ones.

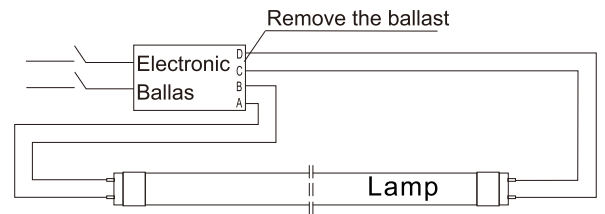
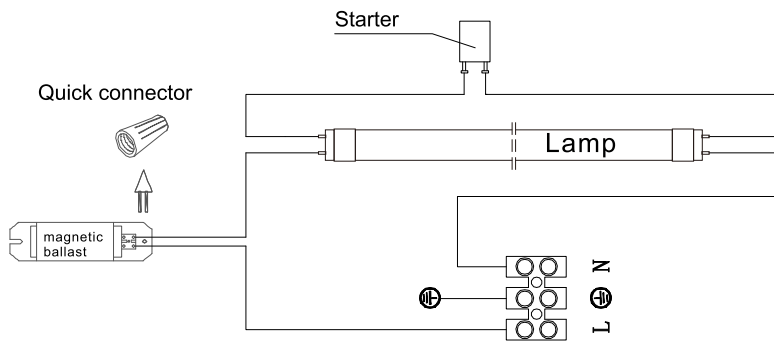
But, we do have limited budget, expecting long lifespan at the same time.



For those that are looking for value for money within limited budget and re-lamping efforts for better light effect and lifetime. NVC bring out economic T8 Tube--- **LED T8E-II**



Retrofit to existing T8 lamps on EM ballast installations, existing fittings are reused, so it's only the starters are removed and magnetic ballast replaced with quick connector. The LED tube base can be rotated to fit the fittings, so it is a simple operation.



1. Replace the magnetic ballast with a quick connector.
2. Remove the starter.

1. Remove the ballast.
2. Connect A and B, connect C and D.

## Energy-saving contrast

Comparison	Product Details		LED T8E-II	Fluorescent T8
Products	LED T8E-II	Fluorescent T8		
Wattage	18W	36W		
Power saving rate	$(36-18) / 36=50\%$			
Total KWh consumed per year(KWh) 8 Hours per day	69	175		
Electricity cost per year(1RMB/KWh)	175-69=106			
Electricity cost saving per year (RMB)	106			
Lifespan	25000Hrs	10000Hrs		
			9w 18w	18w 36w

Under the condition of equal illumination

Compared with traditional fluorescent T8 tubes, LED T8E-II 1700lm light output equal to or even greater than fluorescent tube, 50% energy saving than traditional ones and lasting around 25,000 hours

The LED tubes also offer an extra benefit because of their long lifespan, which means we save the costs of replacement, and increase the lifespan of our oldest fittings, as we no longer risk breaking them when replacing the tubes.

**Special price** for LED T8E-II,9W. As a economic version, the latest special offers and discounts available to those who have met a certain MOQ,and targeted at NVC distributors only.

## NLED480E T8 Batten

If the old traditional battens are too old to reuse or the sizes are too huge, not suitable for a certain place, we recommend you to replace the whole battens and tubes with NVC **NLED480E** T8 economic batten.



Exactly the same design as LED T8E-II tube. Not only higher light output, energy saving, longer lifespan, but also environment friendly, green light.





Besides, we install a iron batten on the basis of LED T8E-II tube to make it a full set to replace the whole traditional T8 batten, no need to change the wiring inside the battens or louvers. Suspension and surface mounted, easy installation.



For convenience stores and small shops, owners care about the rising energy prices and general lighting in every corner of their shops, meanwhile, they are not willing to pay too much on lighting. So NVC NLED480E is the best choice for them. Economic, functional and low cost for maintenance due to its long lifespan. Stylishly thin and light, its small size bring convenience for users.

Both LEDT8E-II tube and NLED480E batten choose SMD 2835 LED chip and glass tube, let us figure out why we choose them.

What type of LED should be used?

LED	Picture	Unit Price (CNY)	Light Area (mm <sup>2</sup> )	Power (W)	Lumen Output	LED Efficiency (Lm/W)	LED Nos to reach 1700lm	Total cost of LEDs	Summary
2835		0.09	9.8	0.18	25	138	66	5.94	1. Best dimension & light area 2. Same performance but with competitive price
3528		0.04	9.8	0.06	9	150	180	7.2	Too expensive
3014		0.05	4.2	0.09	11.5	128	140	7.0	Too expensive
4014		0.09	5.6	0.18	21	117	78	7.02	1. Light area is much narrow 2. Too expensive

Summary : SMD 2835 LED chip is the best solution for economic LED T8 tube and batten

Tube Material Choosing

	Glass + Film	Aluminum + PC	PC
Light transmission rate	~88%	~88%	~88%
Light angle	>300°	<180°	>300°
Material cost	\$0.49	\$1.27	\$0.78
Safety	Good isolation	Isolation not good	Not easy broken Best isolation

Summary : Glass tube is the best solution for economic LED T8 tube

## Specification

- SMD 2835
- Double-ended wiring for T8E-II
- Single-ended wiring for NLED480E
- Glass tube+ Flame retardant PC lamp holder
- Iron body in white painting finish for NLED480E
- Build in constant current LED driver

## Accessories



## Application

- Office, school, supermarket
- Hospital, railway station

## Note

- Match with T8 louver, T8 batten
- Please do not apply to sealed fittings
- NLED480E cannot be series connected

## Option

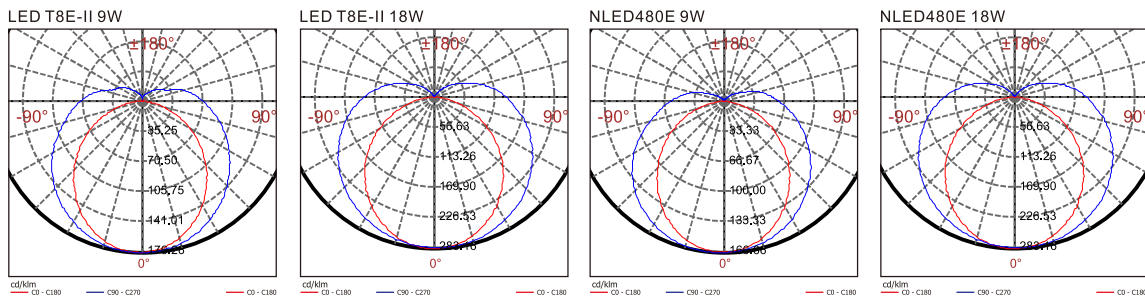


Connection hole in the middle of NLED480E batten for option



Model	Voltage	Watt	Lumens	Color Temp	PF	CRI	QTY CTN	CTN Dimension	MOQ
LED T8E-II	220-240V	9W	850Lm	3000K/4000K/6500K	0.5	≥70	25	648×150×160mm	5000
LED T8E-II	220-240V	18W	1700Lm	3000K/4000K/6500K	0.5	≥70	25	1260×150×160mm	20000
NLED480E	220-240V	9W	750Lm	3000K/4000K/6500K	0.5	≥70	20	670×225×215mm	5000
NLED480E	220-240V	18W	1500Lm	3000K/4000K/6500K	0.5	≥70	20	1280×225×215mm	5000

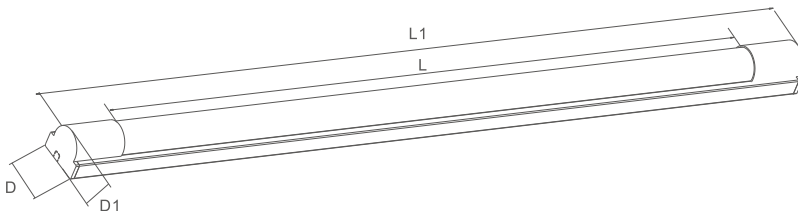
## Photometric Data



## Size



	D	L
LED T8E-II 9W	Ø26mm	588mm
LED T8E-II 18W	Ø26mm	1198mm



	D	D1	L	L1
NLED480E 9W	37mm	30mm	545mm	626mm
NLED480E 18W	37mm	30mm	1155mm	1236mm